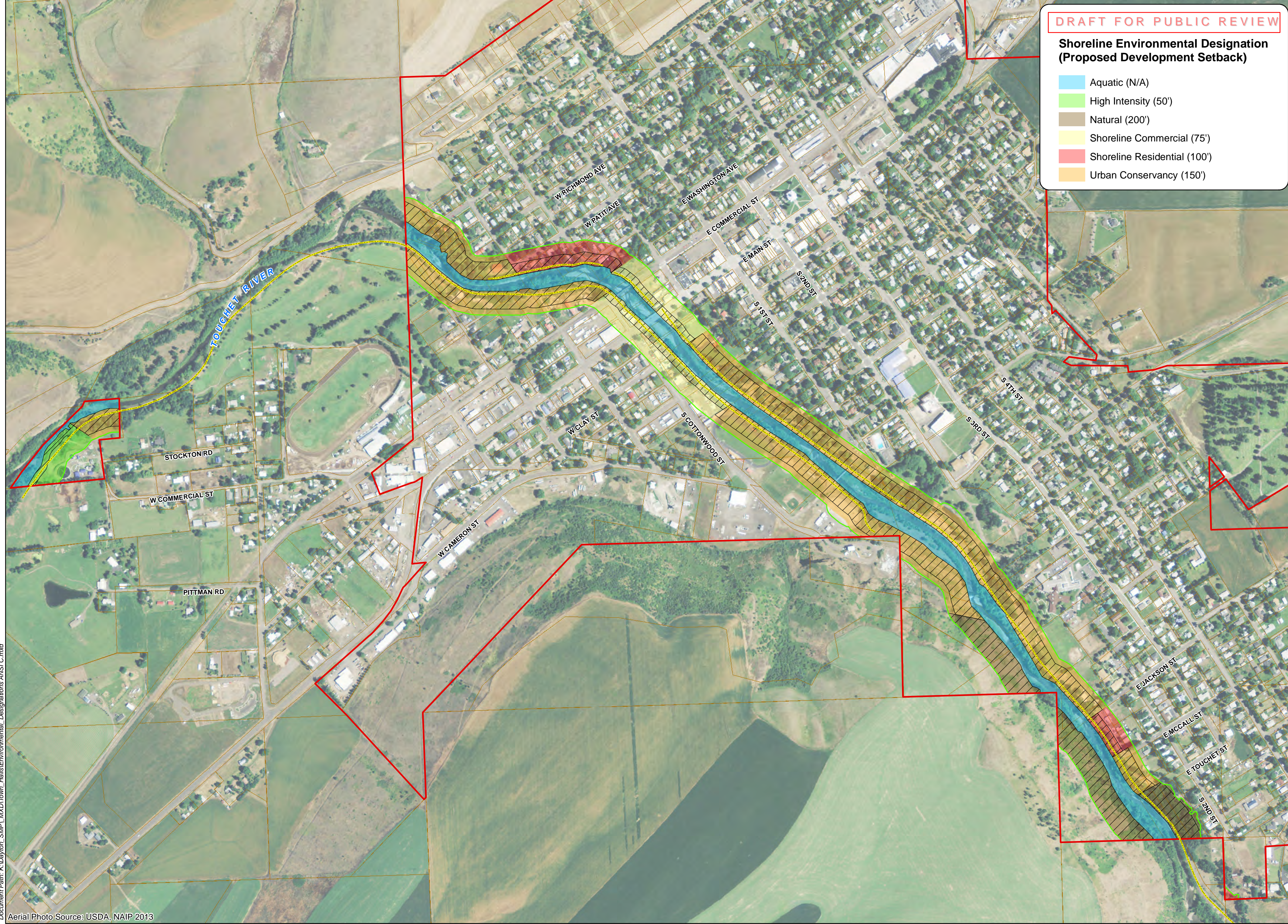


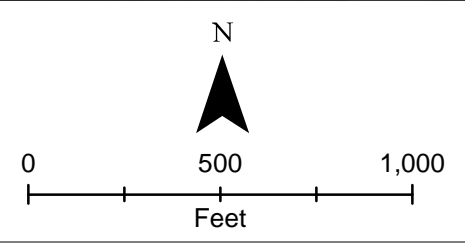
Shoreline Environmental Designation
(Proposed Development Setback)

- Aquatic (N/A)
- High Intensity (50')
- Natural (200')
- Shoreline Commercial (75')
- Shoreline Residential (100')
- Urban Conservancy (150')



Aerial Photo Source: USDA, NAIP 2013

- Legend**
- City Limits
 - Levee
 - Shoreline Master Program Jurisdiction
 - Tax Parcels
 - Development Setbacks



Document Path: K:\Dayton_SMP\MXD\Town_Hall\Environmental_Designations_ANSI_C.mxd